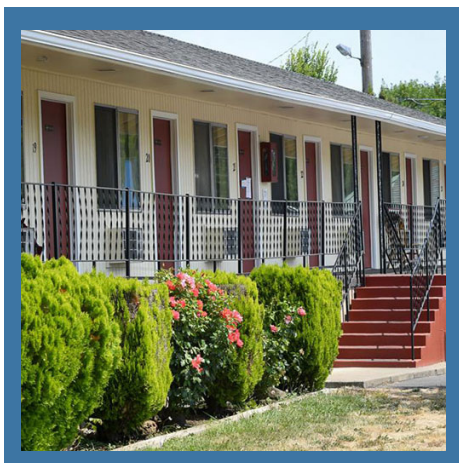




Corvallis Housing First

- Corvallis Housing First (CHF) applied for Project Turnkey 2.0 funding for **shelter and permanent supportive housing (PSH) in Corvallis for older people with disabilities who are experiencing homelessness.**
- For Turnkey 2.0, CHF proposed to **convert an existing hotel building into shelter and housing.** Multiple suitable properties are for sale in the area. Building purchase and renovation **costs are estimated between \$6 million - \$8 million.**
- The **project proposed a phased approach** to begin with shelter beds and then convert rooms to PSH over time. A set number of rooms will be reserved for medical respite care for people who are experiencing homelessness.
- **CHF has several partnerships in place for funding and services.** Committed partners include the City of Corvallis, Benton County, Linn-Benton Housing Authority, InterCommunity Health Network (CCO), Samaritan Health Services, Community Services Consortium, Council of Governments, and the Veterans Administration (via COI).

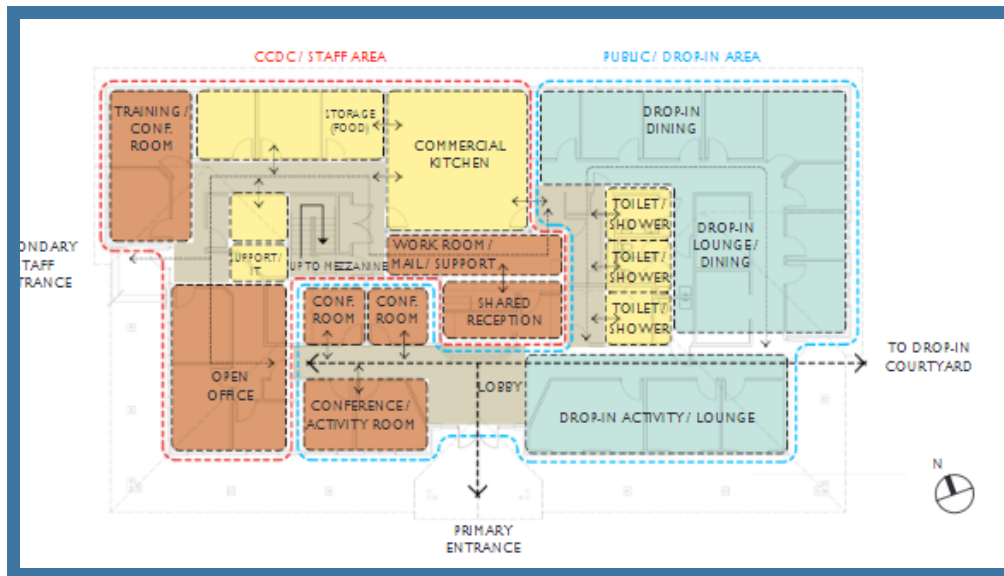


Third Street Commons

CHF currently operates three facilities totaling 42 units of housing with supportive services. They also own Third Street Commons, formerly the Budget Inn, which provides 24 units of non-congregate shelter. (Third Street Commons was made possible with funds from Project Turnkey 1.0).



Corvallis Daytime Drop-in Center (CDDC) is leading the way to build a Navigation Center in Corvallis that will provide **24-7 shelter and crucial services to Tri-County residents who are experiencing homelessness.**



*Concept drawing subject to change

- The proposed Navigation Center will provide **24/7 low-barrier, non-congregate emergency shelter** to literally homeless adults.
- In addition, the Navigation Center will offer **hygiene supplies and services, food, community space, and one-stop social services** including a drop-in center.
- More than 20 **partners have committed support** (i.e., financial, in-kind, and services) to support the project.

Growing Challenges

- The number of people experiencing homelessness in Benton Co. has increased 89% since 2017.
- In 2022, CDDC served 801 unduplicated guests

Estimated Costs

- \$11.5-12.5 million for construction costs
- \$2.5 million land/building acquisition
- \$1.5-2 million for 12 months operating costs