

# IS YOUR CHILD IN THE RIGHT SEAT?

Child Passenger Safety Check-up Clinic



Trained technicians will check your child's seat for:

- Correct installation
- Recalls and damage
- Best fit for weight, height, and age



Please bring with you:

- Your child
- Your car seat and manual
- Your vehicle manual

\*Please allow 30-60 minutes for each seat checked

## Corvallis Fire Station #1

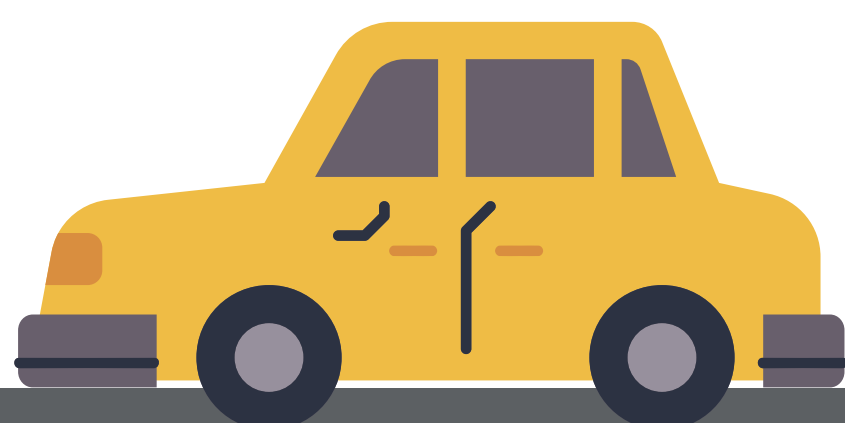
400 NW Harrison Blvd.  
Corvallis, OR 97330

**Call for an appointment:**

(541) 766-6961



For videos, and more information



SAFE  
K:IDS  
WORLDWIDE®

  
NHTSA

Created: 11/2022 - MM