

HOPE Advisory Board

August 28, 2024 Public Meeting

Meeting Facilitated by the
Coordinated Homeless Response Office



Virtual Meeting Housekeeping

- Please mute your microphone until it is your turn to share.
- All attendees can unmute themselves and choose to be seen visually by clicking “Mic” or “Camera” at the top right of the screen.
- Public comment:
 - Type your name into the “Chat” area, say you want to make a public comment, and on what topic. Example: “Julie – public comment – crisis response.”
 - For those on the phone, there will be an opportunity to comment, too.
- Questions during the meeting:
 - Type into the “Chat” area.

Agreements for our culture + conduct:

Fun

Inclusive ✓✓

humor

Food ✓

Action/roll up sleeves

Change the face of Homelessness

honesty

Respect ✓

consensus

Think before you speak

Courtesy ✓

transparency

Recognize personal bias

Kindness ✓

time management

Concise communication

Open minded ✓

opinions matter

data driven

Do your homework!

patient

Authentic

Valuing personal experience

dedication/work ethic
honor the expectations of
the work

The Coordinated Homeless Response System includes these four entities.



- The Coordinated Homeless Response Office staff reside within Benton County Health Department.
- The HOPE Board and HOPE Executive Committee have representation from elected officials and highest staff members from these four entities.

Meeting Agenda

- I. Welcome and Overview of Agenda.....4:00pm
- II. Public Comment* (up to 10 minutes)4:00pm
- III. Meeting Business.....4:10pm
- IV. Coordinated Homeless Response Office Community Engagement.....4:20pm
- V. Educational Component: Point in Time (PIT) Count4:50pm
- VI. Community Progress Update: Homelessness and Health Care Data5:15pm

“Health Care Services Utilization Among People Struggling with Homelessness”

Guest Speakers:

Dr. Paulina Kaiser, Director, Research & Evaluation, Samaritan Health Services

Cory Hackstedt, HMIS Data Analyst/Agency Administrator, CSC

Dr. Mark Edwards, School of Public Policy, Oregon State University

Dr. Barbara Hudson-Hanley, College of Health, OSU (HOPE Board Member)

Public Comment

10 Minutes

Comment limited to 2-3 minutes based on number of people wanting to comment

Type into the “Chat” and say you want to make a public comment and on what topic.

For those on the phone, there will be an opportunity for public comments.

Can also submit written comments to the Board via email to Julie.Arena@bentoncountyor.gov

Meeting Business

1. Co-Chair election for Matt Easdale – *POSTPONED until October meeting*
2. Update on Business Community representation
3. Roll Call and Meeting Minutes Approval

Vote on May 2024 minutes, roll call

Jessica Andrade* (Philomath City Councilor)

Karyle Butcher

Bruce Butler

Alice Carter

Bryan Cotter

Cade DeLoach

Sarah Devine

Anita Earl

Matt Easdale

Joel Goodwin

Ari Grossman-Naples

Barbara Hanley (excused)

Briae Lewis* (Corvallis City Councilor)

Rachel McEneny* (Benton County Administrator)

Dina Eldridge* (CSC Designee)

Andrea Myhre

Ailiah Schafer

Mark Shepard* (Corvallis City Manager)

Chris Workman* (Philomath City Manager)

Nancy Wyse* (County Commissioner)

*Executive Committee Members

HOPE 2024 Work Plan

May: Flexible Housing Subsidy Pool (FHSP) progress on program implementation – another opportunity for community partner engagement as we move forward with implementation.

August: Final community engagement session on the FHSP.

October: Severe weather emergency response plan.

*We will be seeking HOPE members to volunteer on smaller work groups for specific projects. Example: FHSP and a Notice of Funding Opportunity (NOFO) Review Committee with participation from people with lived experience with homelessness.

**Coordinated
Homeless
Response Office
(CHRO)
Community
Engagement**

Staff:

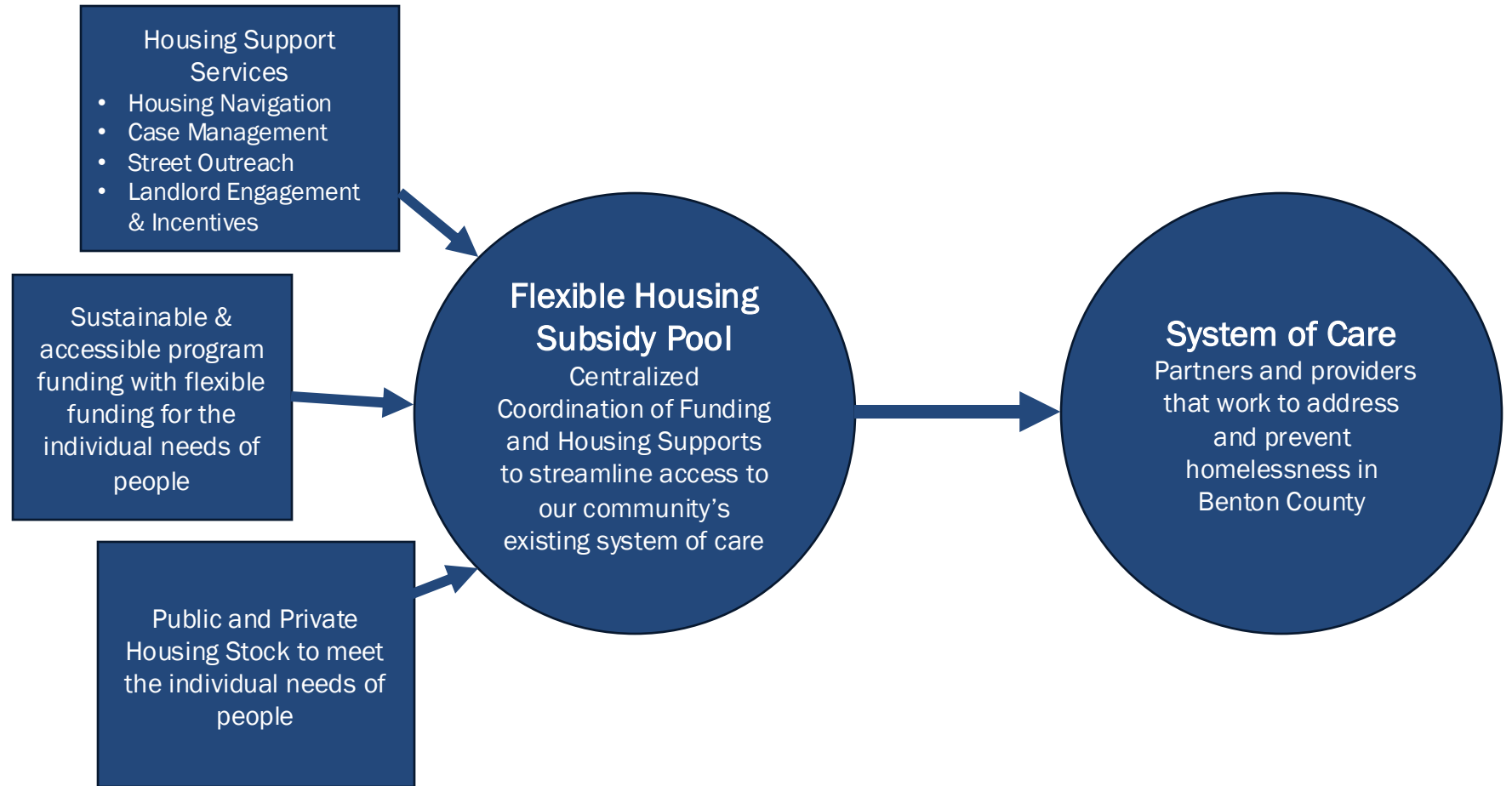
Rebecca Taylor, Project
Manager

Julie Arena, Program
Coordinator

- **OHCS Rehousing Funding**
 - HB 5019 (2023) Rapid Rehousing
 - Oregon Rehousing Initiative (2024)
- **Flexible Housing Subsidy Pool (FHSP) Program**
- **Updates and Feedback**

May 2024 Update on FHSP: Centralized coordination of systemwide housing resources

FUND, LOCATE, AND SECURE HOUSING WITH SUPPORT SERVICES FOR PEOPLE EXPERIENCING HOMELESSNESS THROUGH A COORDINATED SYSTEM OF CARE. FLEXIBILITY TO SUPPORT THE PERSON AND THE PROVIDER.



May 2024 Update: Staff and System Capacity for FHSP

Staff Capacity at Benton County

- Program Coordinator to support FHSP program referrals, data collection, communications, outcomes, etc.
- Housing Navigator for direct client support with housing navigation, care coordination, referrals and housing placement.

Community Capacity (NOFO)

- Street Outreach to connect people experiencing homelessness with the system of care and referrals to the FHSP.
- Case Management to support people on their housing journey and make connections to FHSP resources.

August 2024 Flexible Housing Program Staff

- Penny Belyeu started in June: Housing Navigator for direct client support with housing navigation, care coordination, referrals and housing placement.
- Porter Arch started in August: Program Coordinator to support FHSP program referrals, data collection, communications, outcomes, etc.

Flexible Housing Program Contractors

- **Street Outreach** to connect people experiencing homelessness with the system of care and referrals to the FHSP:
 - Corvallis Daytime Drop-in Center
- **Case Management** to support people on their housing journey and make connections to FHSP resources:
 - Corvallis Housing First
 - Faith, Hope, and Charity, Inc.

**Special thanks to Ari Grossman-Naples, Cade Deloach, and Barbara Hanley who scored the applications for funding.*

To ensure equity, diversity, and inclusion throughout this work, the CHRO engaged the HOPE Board and included HOPE Board members with lived experience with homelessness in decision-making for this funding.

What does it take to build a housing program?

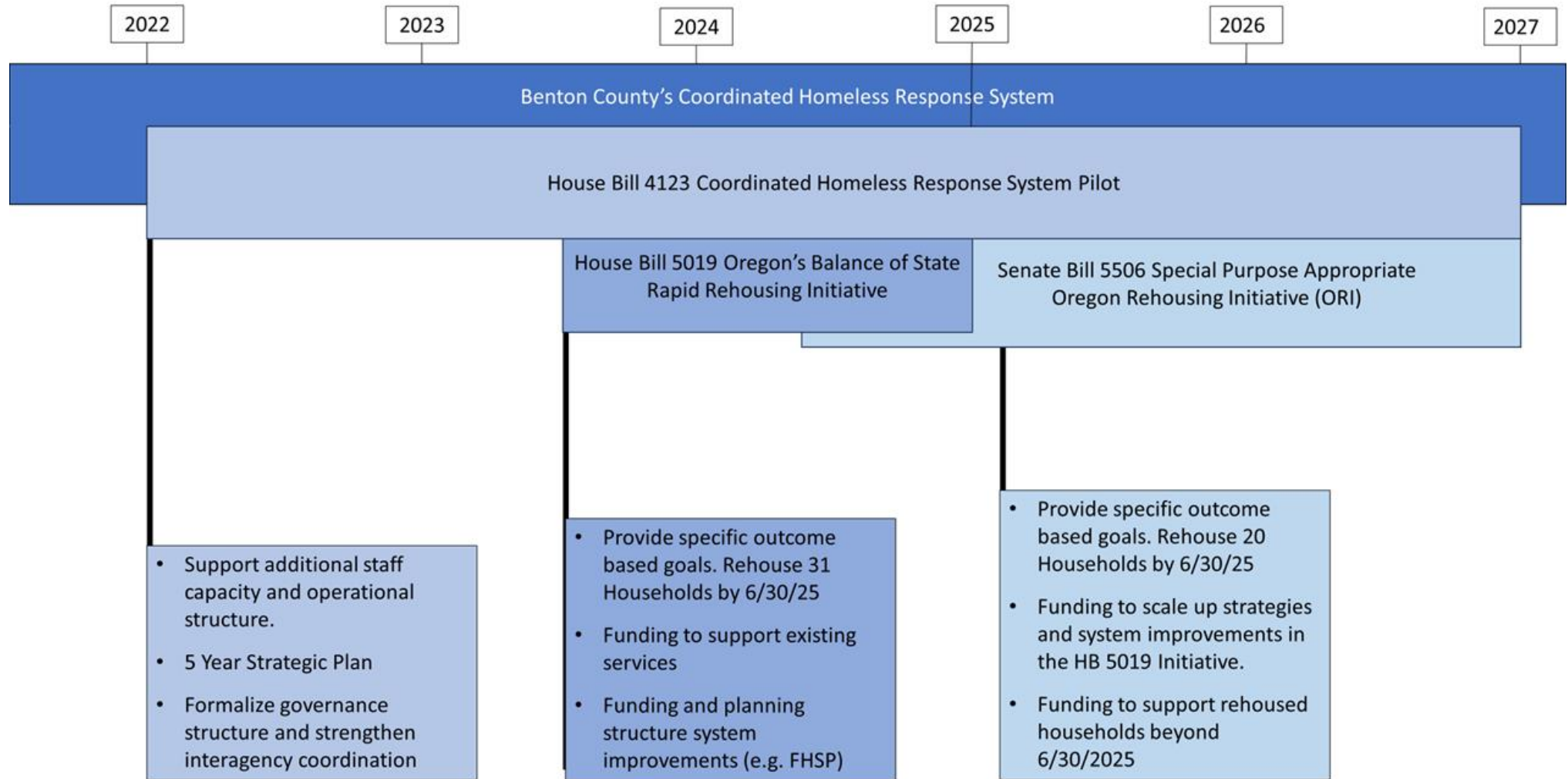
Flexible Housing Program Elements

Forms, policies, procedures, documentation, data collection:

- Policies for Privacy, Confidentiality, Conflict of Interest, and a Grievances and Appeals Procedure.
- Forms to document homelessness status, rent calculation, utilities worksheet, lease agreements.
- Letters for outreach to property managers, cover letters for individual clients for housing appeals.
- Procedures for referrals, contracts, funding stream tracking.
- Internal system building with county contracts, finance, administration, behavioral health, health navigation.
- Building projects within HMIS to track data and funding streams.
- Training for new staff.
- Outcome measures in progress with input from IHN, Community Health Centers, and the ROCC.

*Special thanks to CSC, LBHA, ODHS, COG, Unity, CHF, COI, FHC, county BH, and community partners for input in shaping these policies and the program itself.

Benton County's Coordinated Homeless Response System Timeline of Supporting Initiatives



Flexible Housing Program Funding

- **Funding streams received:** HB 4123 for staffing. HB 5019 for staffing, contractors, rental assistance, move-in costs. HB 5019 for Unity two shelter locations to reopen 50 beds.
- **Funding streams we have applied for:**
 - IHN-CCO community capacity building funds for waiver benefits like rental assistance.
 - IHN-CCO Delivery System Transformation funding for landlord outreach, engagement, and incentives to access private market housing units.
- **Funding streams we plan to explore:** Housing 360 to strengthen outreach to unsheltered households. Other opportunities like criminal justice funding, Measure 110, federal sources.

Flexible Housing Program Successes

- **City of Corvallis purchased property on Van Buren that is planned to add at least 7 supported transitional housing units with other resources onsite.**
- **Outreach to affordable housing locations has yielded access to units.**
- **Good news – FHSP first round of lease ups! Special thanks to Corvallis McKinney Vento family advocates, the CDDC, and CHF for supporting housing transitions.**

FHSP Participant Experience

Within one month of engaging with the FHSP, here is the human impact:

- 5 set aside units at an affordable housing location – and 5 housed families!
- In those 5 households:
 - 6 adults
 - 11 children in beds with a roof over their heads
- 10 more households in progress

*One year from when we heard from our HB 5109 Local Planning Group that we needed to add capacity like this.

Q&A on Flexible Housing Subsidy Pool (FHSP)

Questions about the program?

Community Updates

Website Update – now available:

- 5-Year Strategic Plan for HB 4123 was approved and submitted to Oregon Housing and Community Services (OHCS).
- HB 4123 Annual Report from 2023
- HB 4123 Annual Report for 2024 in Progress

<https://health.bentoncountyor.gov/coordinated-homeless-response/chro-strategic-plan/>

Educational Component:

Point in Time (PIT) Count

**Guest Speakers from Community
Services Consortium (CSC)**

Dina Eldridge, Housing Senior
Operations Manager

Cory Hackstedt, HMIS Data
Analyst/Agency Administrator,

Community Progress Update:

“Health Care Services
Utilization Among People
Struggling with Homelessness”

Guest Speakers:

Dr. Paulina Kaiser, Director, Research & Evaluation,
Samaritan Health Services

Cory Hackstedt, HMIS Data Analyst/Agency

Administrator, Community Services Consortium
(CSC)

Dr. Mark Edwards, School of Public Policy, Oregon
State University

Dr. Barbara Hudson-Hanley, College of Health, OSU
(HOPE Board Member)

HEALTH CARE SERVICES UTILIZATION AMONG PEOPLE STRUGGLING WITH HOMELESSNESS



Samaritan
Health Services



Oregon State
University

Background

- **Housing and health and health care**
- **To what extent do housing insecure people use hospital services?**
What are the patterns that can be observed?
- **Benton, Linn, Lincoln counties**
 - **Samaritan Health Services and Community Services Consortium**
 - **OSU Policy Analysis Lab (OPAL)**
 - **Funded by IHN (local CCO)**

The Challenge

- How to link existing, “silo’ed” data from different organizations while protecting people’s anonymity?

The Solution

- Privacy-preserving record linkage: use cryptographic ‘hashing’ algorithm to convert identifiable information (first name, last name, date of birth, sex) to deidentified string of 1s and 0s
- Algorithms are deterministic but irreversible
- SHS & CSC ran the hashing algorithms internally, sent deidentified data to OSU for analysis

The Data We Assembled

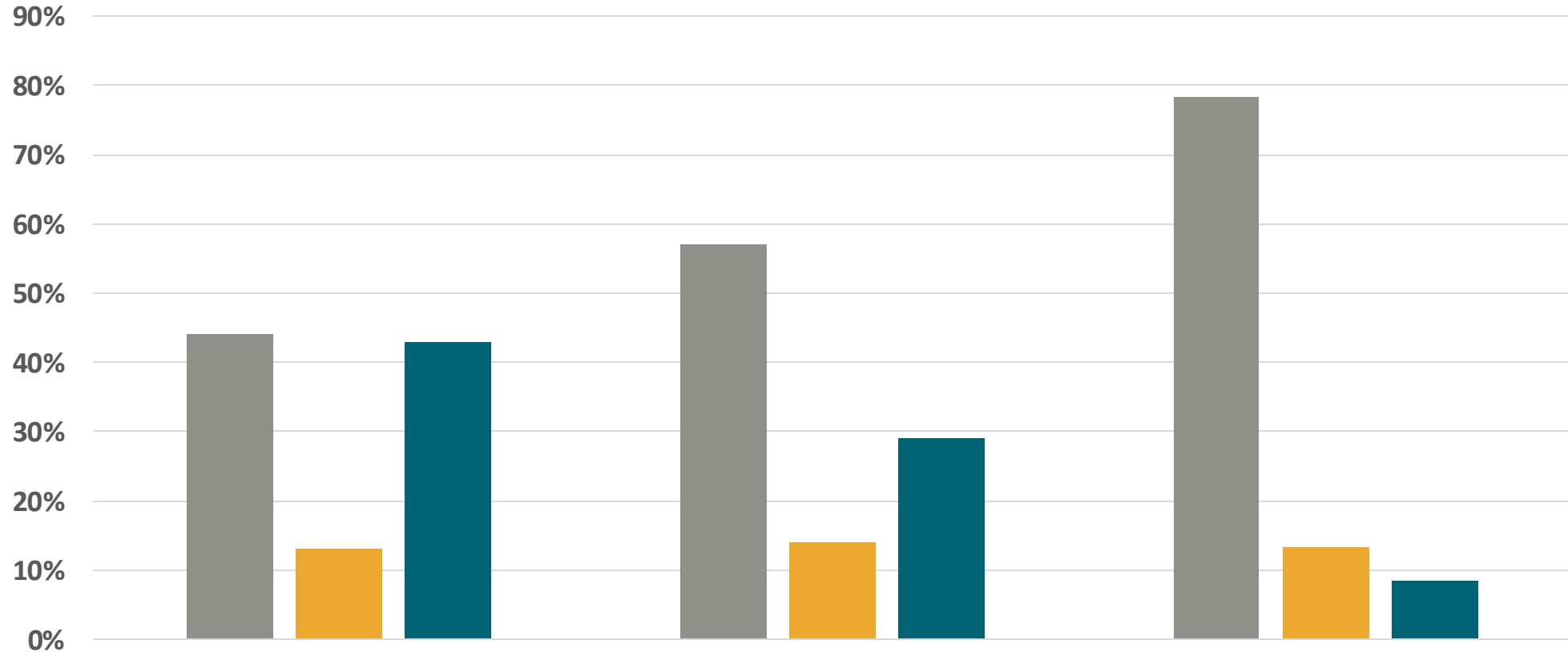
- From CSC: adults 18+ served by homeless services programs in 2022 (Linn, Benton, & Lincoln Counties)
 - From SHS: patients flagged as homeless* in Epic in 2022
 - ED visits & hospitalizations (complete coverage in the LBL region)
- *using custom registry – imperfect!*

Cohort Characteristics (2022)

	SHCSC Data (N = 775)	Linn, Benton, Lincoln (PIT)	L,B,L 2020 Census
Woman	42%	40%	50%
Man	58%	60%	50%
Black, African American, African American Indian, Indigenous	4%	1%	.7%
Asian or Asian America	.5%	.5%	3%
Native Hawaiian or Pacific Islander	.5%	.3%	.3%
White	88%	88%	84%
Multi, unknown, other	1%	6%	7%
Hispanic/Latinx	11%	12%	9.4%
Veteran? Yes	12%	--	7.2%
Benton County	50%	37%	35%
Lincoln County	14%	20%	18%
Linn County	35%	43%	47%
Chronically homeless	21%		

“Lives in a place not meant for human habitation, a safe haven, or in an emergency shelter, and has been homeless and living as described for at least 12 months or on at least 4 separate occasions in the last 3 years.”

Previous Year Emergency Department Visits 2022



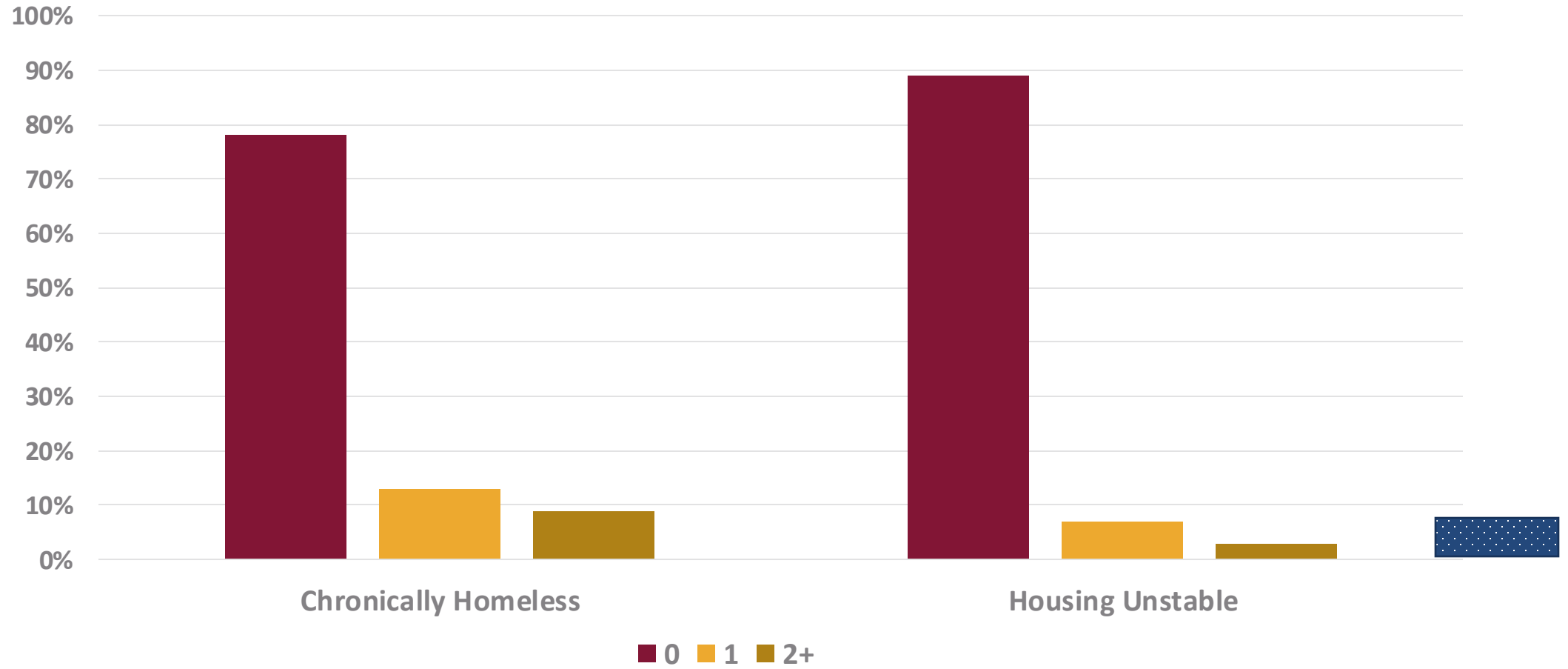
Chronically Homeless

Housing Unstable

National General Public

■ 0 ED visits ■ 1 ED visit ■ 2+ ED visits

Hospitalizations in Previous Year 2022



Distribution of Emergency Department Visits by SHCSC Cohort (2022)

	ED Visits (775 people)			
Visits	Chronically Homeless (166 people)	Housing Unstable (609 people)		
0	44% (73)	57% (348)		
1	13% (22)	14% (85)		
2-4	23% (39)	19% (116)		
5-6	6% (10)	3% (20)		
7-9	4% (7)	3% (21)		
10-12	5% (8)	1% (6)		
13+	4% (7)	2% (13)		
	100%	100%		

Distribution of Emergency Department Visits by SHCSC Cohort (2022)

	ED Visits (775 people)			
Visits	Chronically Homeless (166 people)	Housing Unstable (609 people)		
0	44% (73)	57% (348)		
1	13% (22)	14% (85)		
2-4	23% (39)	19% (116)		
5-6	6% (10)	3% (20)		
7-9	4% (7)	3% (21)		
10-12	5% (8)	1% (6)		
13+	4% (7)	2% (13)		
	100%	100%		

**Distribution of Emergency Department Visits
by SHCSC Cohort (2022)**

Visits	ED Visits (775 people)		Percentage of all ED visits by the cohort (1,546 visits)	
	Chronically Homeless (166 people)	Housing Insecure (609 people)	Chronically Homeless	Housing Insecure
0	44% (73)	57% (348)	--	--
1	13% (22)	14% (85)	1% (16)	6% (94)
2-4	23% (39)	19% (116)	6% (94)	20% (310)
5-6	6% (10)	3% (20)	4% (63)	7% (109)
7-9	4% (7)	3% (21)	4% (63)	10% (156)
10-12	5% (8)	1% (6)	6% (94)	4% (63)
13+	4% (7)	2% (13)	8% (125)	23% (357)
	100%	100%		

12% of the cohort account for 66% of the visits made by homeless residents

Policy Considerations and Next Steps

- We've learned a little . . . We need to get the whole story
 - Link with public health and/or other health records
 - Find out how these patterns compare to general public
- Calculate costs associated with these patterns
- Consider tradeoffs of investing in housing for those with high health care utilization
 - Beware of cause/effect, and size of effect.



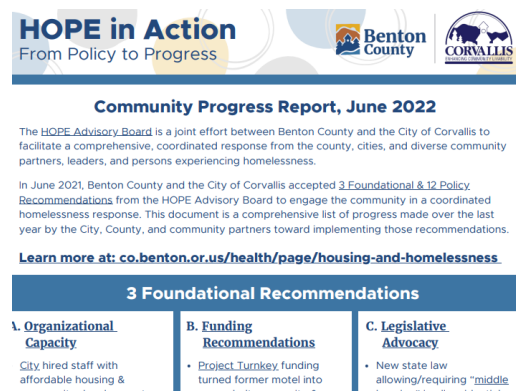
Oregon State
University

Central Point of Communications



HOPE Website

- [Central point of communication](#)



Projects & Progress

- [Coordinated Homeless Response Office](#)



e-Newsletter

- [Subscribe to HOPE News & Updates](#)



Social Media

- [Amplifying aligned messaging through partner engagement](#)





At your service,
every day.



/BentonCoGov



@BentonCoGov



@BentonCoGov



/BentonCountyGov



Benton County